

property



Tiffani AT THE TOP

The world of prestigious, residential lifestyles welcomes a new player into its exclusive club

Fann Wong, above and Bernard Chandran find relaxing is easy at Tiffani by i-ZEN



Luxury residential project, Tiffani by i-ZEN at Mont Kiara, is helping to break new ground in Kuala Lumpur.

It is one of the purveyors of luxury lifestyles that is backed by experienced and trusted property companies.

Officially launched by developer, Ireka Land Sdn Bhd, in July it offers a stylish, relaxing environment for those who are after the very best in upmarket, contemporary lifestyles.

The three tower condominium development by Ireka Land is in collaboration with CapitaLand Financial Limited, a subsidiary of CapitaLand Limited, one of the largest listed property companies in Asia.

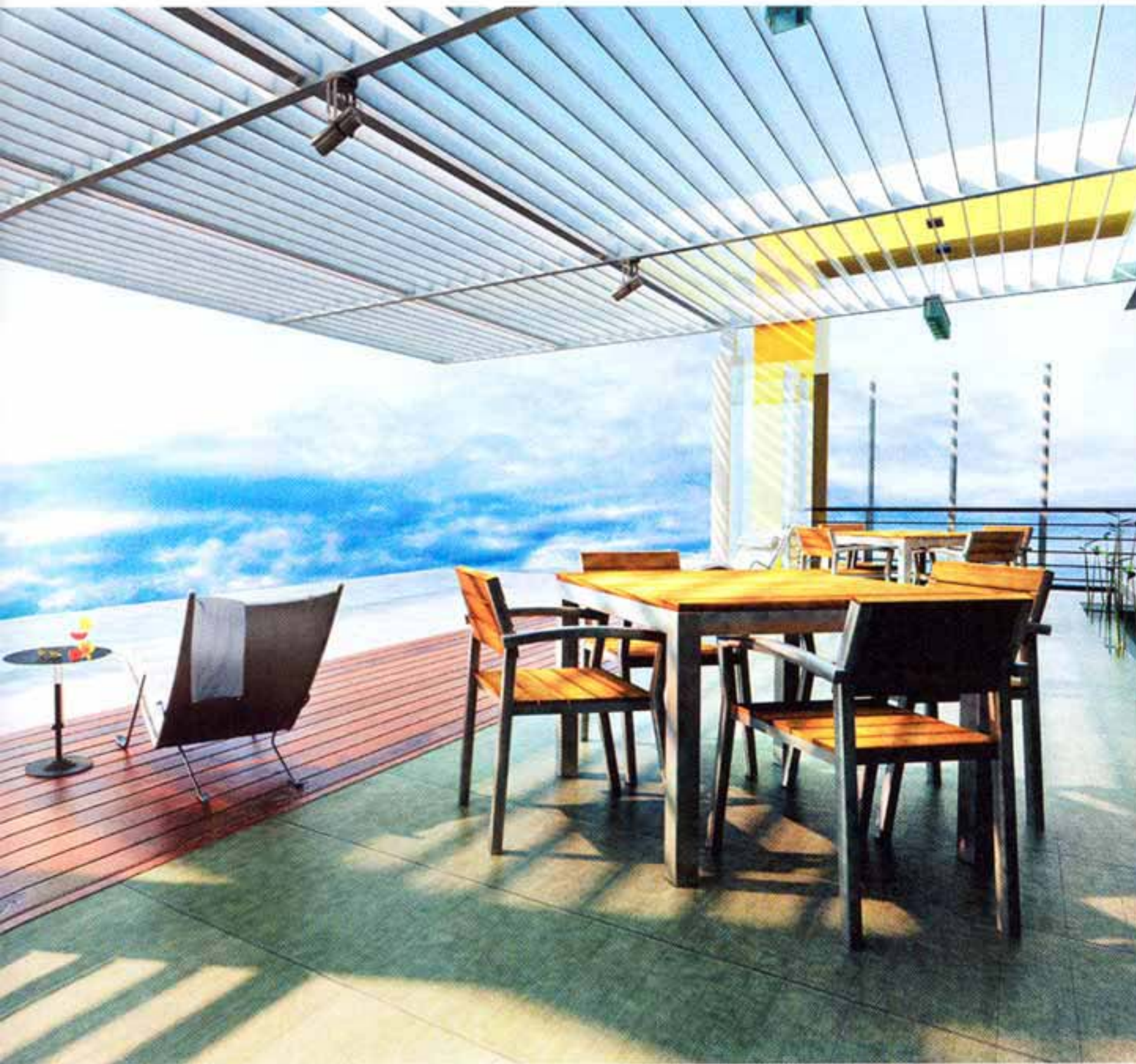
Mont Kiara is perceived to be a perfect location in Kuala Lumpur. According to the CEO of Ireka Land Sdn Bhd and Executive Director of Ireka Corporation Berhad, Mr Lai Voon Hon, Tiffani by-ZEN is ideally situated. He says Mont Kiara is one of the most well received neighbourhoods among the expatriate community of Kuala Lumpur, fetching high-yield rentals due to its amenities, prestige and convenience.

Mr Lai also emphasized the branding which offers strength and synergy in luxury property development and the hospitality industry through Ireka Group's other projects such as The Westin Kuala Lumpur and i-ZEN Hospitality.

"Our in-depth understanding of the lifestyle needs of those who would potentially purchase high-end condominium units gives us an edge over other developers," he said.

Mr Lai was joined at the launch by Managing Director of CapitaLand Financial Limited, Mr Chan Say Yeong, Chairman of Ireka and Sdn Bhd and Group Managing Director of Ireka Corporation Berhad, Mr Lai Siew Wah, as





“Our in-depth understanding of the lifestyle needs of those who would potentially purchase high-end condominium units gives us an edge over other developers”

well as members of the Board of Directors and Senior Management of Ireka Land Sdn Bhd.

Each unit has been designed to be and feel very spacious with ample storage, unlike many on offer in Kuala Lumpur. All units are furnished with designer kitchens and built-ins, equipped with broadband connectivity and modern-day security features.

In addition, Tiffani by i-ZEN also offers concierge services at each lobby; optional house-keeping; 24 hour state-of-the-art security and other facilities and amenities one would expect in an international, luxury property.

Recreational facilities provided include tennis courts; squash courts; a well-equipped gym, a large swimming pool and an infinity-edged sky pool complemented with an exclusive clubhouse.

The uniqueness of Tiffani by i-ZEN is in its innovation designs. Home owners can select between two interior styles to suit their own individual lifestyle and personal tastes.

Those with more a lavish taste for decorating would find the Modern Classical a perfect choice. While for those who love urban sophistication, the Contemporary style would be the perfect option.

This is the first i-ZEN project which allows buyers a choice of design which fashions uniquely different lifestyle concepts and interior designs, creating luxurious comfort for its owners.

A distinctive feature of Tiffani by i-ZEN is The Sanctuary, which consists of a landscaped courtyard with piped music, specially for residents to unwind and de-stress after a hard day.

With all this in perspective, the development of this property has been acknowledged as having lasting economic benefits for buyers.

The stylishly modern units are priced between RM390,000 to RM4.6 million. They are available in a variety of sizes from 815 square feet, to a magnificent 8,011 square foot penthouse. As of now, Tiffani by i-ZEN

has already registered close to 50% in pre-launch sales.

Constantly inspiring and indulging its potential home buyers and guests with thoughtful, refreshing and stylish designs, Ireka Land Sdn Bhd is the owner and developer of a selection of innovative and meticulously designed up-market residential and commercial properties in Malaysia. These include the sharp and chic Kiara I, Kiara II and Villa Aseana. CapitaLand Limited is one of the largest listed property companies in Asia with its core business in property, hospitality and real estate financial services.

So whether it is just to delight in a new dimension of urban living or to build an exciting place to live, work and play, Tiffani by i-ZEN is a haven in which to recharge at the heart of hip, urban enclave, Mont Kiara. Combined with modern lifestyle amenities and a total wellness experience, Tiffani by i-ZEN is where life comes into balance. □